



Northview Crescent, London, NW10 1RD

£250,000 - Leasehold

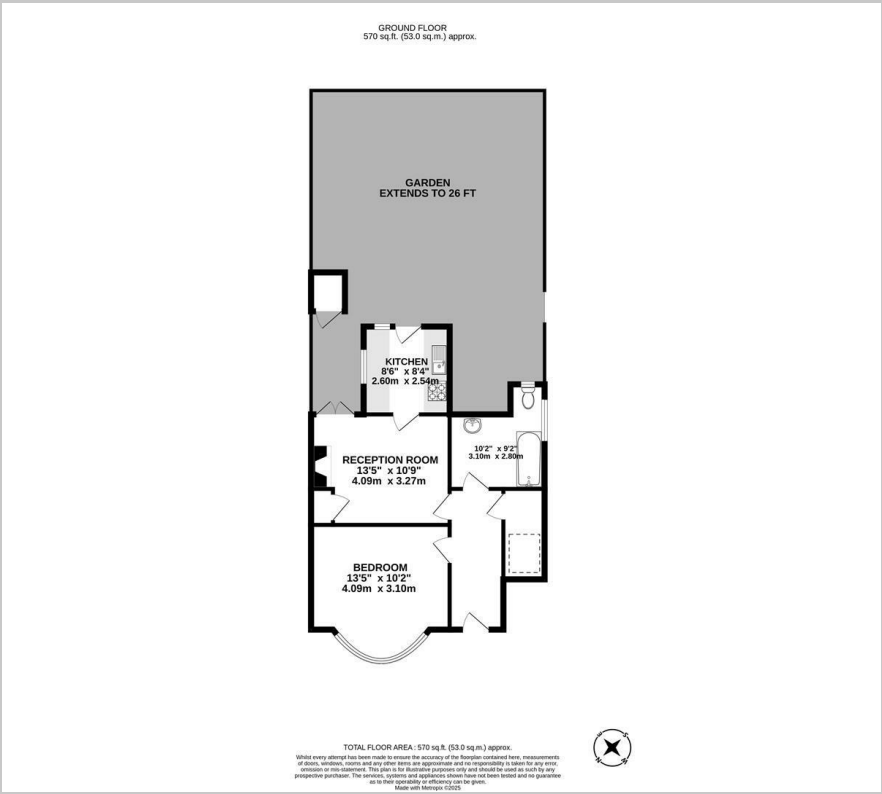
****CHAIN FREE**** A 1 bedroom ground floor maisonette in need of complete modernisation. Benefits include a private entrance and a section of rear garden. Located only 0.3 miles to Neasden Tube station and Gladstone Park.

Lease: New lease of 150 years
Ground Rent: N/A

- Ground floor maisonette
- 1 bedroom
- Private entrance
- Section of garden
- Close to Tube
- Close to park
- Chain free
- Brent council tax band C



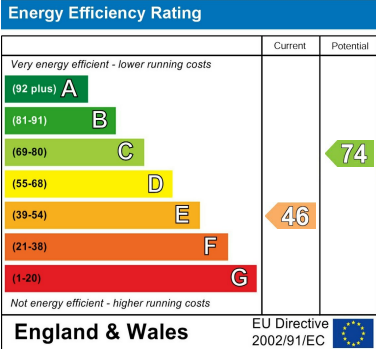
Floor Plan



Area Map



Energy Efficiency Graph



These particulars, whilst believed to be accurate are set out as a general outline only for guidance and do not constitute any part of an offer or contract. Intending purchasers should not rely on them as statements of representation of fact, but must satisfy themselves by inspection or otherwise as to their accuracy. No person in this firm's employment has the authority to make or give any representation or warranty in respect of the property.